



Pauline Roy  
gravures

MADE IN AVEYRON





5	About
7	Press release
9	Know-How
11	Taming the material
13	Création
21	Collaboration - Tableware
23	Avant-scène Art gallery
25	Cub'art Art gallery
27	Made to measure
35	Aveyron, land of inspiration
37	Pauline Roy gravures, etchings next
39	Passed exhibitions
40	Photo credits

*The visuals presented in the pages of this dossier represent a selection available to the press. These images are free of rights and may be used. Each image must be accompanied by its caption and the corresponding credit. Please contact me if you wish to download them in high definition.*

Cover :  
**Wall light**  
**Dans l'arbre**  
2024  
D : 12cm  
H: 100,4cm  
Sandblasted glass  
and brass

**Pauline Roy**  
06 85 38 48 42  
paulineroy.gravures@gmail.com  
www.paulineroygravures.com  
45, rue du Pont Rouge, 12630 Montrozier

**Office**  
28, avenue de Suffren, 75015 Paris

**Workshop at Ver'art**  
167, rue de la Sauvegarde, 12000 Rodez











## ABOUT

### PAULINE ROY CREATES GLASS BETWEEN PARIS AND AVEYRON.

#### THE STORY OF A CAREER CHANGE

Pauline Roy decided to change her life to pursue her passion five years ago. A graduate of Penninghen, she studied art history at the École du Louvre for two years.

Art is her future, creating her passion, glass becomes her material. She will be a glass designer, creating decorative objects and furniture (tables, mirrors, wall lights) in sandblasted, hand-engraved glass.

Drawing, sandblasting, digging with a stylus to deconstruct matter, in Rodez, the land of her roots, Pauline Roy nourishes her work with the nature that surrounds her.



#### MUSEUM

She joined the Musée National des arts asiatiques Guimet in 2008 as a graphic designer and ended up designing exhibition backdrops covering more than 600m<sup>2</sup> 11 years later. Working in close contact with the works of art helps her to understand the importance of passing on ancestral know-how throughout history.

She discovered the work of Chu- Teh-Chun, a contemporary Chinese artist who exhibited 56 vases, painted by himself at the Manufacture de Sèvres. These 56 unique pieces take the viewer on as many journeys. Pauline Roy understands the very meaning of the words 'contemporary work of art'.

Five years ago, Pauline Roy decided to change her life to follow in the glass tradition in her own way.

#### GLASS

Glass, an age-old material considered precious in ancient Egypt, is now part of our everyday lives. Yet it offers an infinite variety of explorations and textures.

She ordered a bespoke mouth-blown vase and it was during the first confinement between March and May 2020 that she engraved it with a diamond point for 150 hours.

From there, it was as if the path had been mapped out. Vincent Breed, who blew her first piece, sent her to his friend Gilles Chabrier, a glass artist who trained her in the sandblasting technique, took her under his wing and supported her throughout her project. Pauline will use the skills she has acquired at Ver'art, a glassmaker in Rodez, where she sublets her workshop. Because it's in Aveyron that Pauline Roy has found her niche.

[www.paulineroygravures.com](http://www.paulineroygravures.com)

#### AVEYRON

In her region, nature is omnipresent, celebrated and protected by its inhabitants. Humble and supportive, they are passionately attached to their land.

These dimensions are an integral part of Pauline Roy's work: when she's in her fiefdom, she draws, photographs, observes, soaks up and feeds off everything around her.

Selected, supported and trained by BDMMA - Ateliers de Paris in 2021, SARL Pauline Roy gravures was born in 2022.

#### TODAY

Pauline Roy regularly exhibits her work at trade fairs such as Révélation 5, Révélation 6, Paris Déco Home, Les Rendez-vous de la matière, and in galleries for temporary exhibitions. Her customers are mainly interior designers who entrust her with glass decoration projects.

After 3 years in business, Pauline Roy is now officially recognised as an artisan d'art.

His work has recently been recognised by the Michelangelo Foundation, and is now included in the Homo Faber guide to Europe's finest craftsmen.

[www.homofaber.com/fr/guide](http://www.homofaber.com/fr/guide)

Left page :  
An interior window  
Vue sur un jardin imaginaire  
(View Of An Imaginary Garden)  
Vase with Dandelion  
flower design  
2023, blown  
and sandblasted glass

Below :  
Portrait  
2023





# PRESS RELEASE

AT THE GRAND PALAIS IN PARIS, FROM 21 TO 25 MAY 2025



The 'Dans l'arbre' wall light is a tribute to nature and its essence. It will be presented as part of the Révélations international biennial under the glass roof of the Grand Palais in Paris from 21 to 25 May 2025. The bark decoration, adorned with leaves and moss, is a visual and tactile element that invites touch and contemplation. As the tree's protective shell, the bark evokes strength and resilience. When you touch this bark carefully, you don't just feel a texture; it's as if you can perceive the tree's vital energy, this quiet, unchanging essence that has stood the test of time. The tree is a symbol of wisdom. It has preceded us and will survive us. It is the silent spectator of humanity. It teaches us the importance of patience, growth and perseverance. This play evokes life in all its complexity and twists and turns. It symbolises resilience, the wisdom of nature, able to hold on and thrive even in difficult environments. Every aspect, every crevice, every volume of the bark tells a story, the story of growth, the cycles of life and the beauty that emerges from imperfection. It's a metaphor for our own existence, made up of challenges, transformations and ephemeral beauties. sanding on a curved surface (with a small radius) requires a certain amount of mastery to achieve true regularity in the reliefs and hollows.

Design and production :  
Pauline Roy gravures  
With the metal work of bronze artist Louis Castillo

Now available in 2 sizes:  
- H. 1004mm x D. 120mm  
- H. 804mm x D. 90mm

Sandblasted glass, raw brushed brass with sound varnish and polish. Outdoor transformer - 4000k LED lighting. Dimmable LEDs and transformer.

Grand Palais  
7 avenue Winston Churchill - 75008 Paris  
[www.revelations-grandpalais.com](http://www.revelations-grandpalais.com)

1.

1.

Left Page :  
Wall light  
Dans l'arbre  
2024  
D : 12cm  
H: 100,4cm  
Sandblasted glass  
and brass

Below :  
1. Wall light  
Dans l'arbre  
(Detail)  
2024

2.  
Révélations  
2025

3. Preparatory  
drawing  
Dans l'arbre  
2024

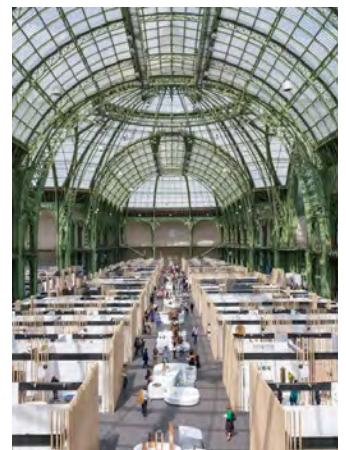
4. Grand palais



2.



3.



4.

7







## DRAWING, SANDING, DIGGING WITH A STYLUS TO DECONSTRUCT THE MATERIAL.

### CREATION

When an idea takes shape in her mind, Pauline Roy draws numerous sketches, thinking up motifs, materials and objects. Despite her technical skills and the fact that she has to understand everything down to the last millimetre, she has to preview the piece she's working on. Volumes on glass are always a surprise.

### UNIQUE, HAND-CRAFTED PIECES

The photophores and vases are mouth-blown by Vincent Breed in Lyon. The positioning of the motifs is random and the depth of the hollows varies systematically from one surface to another. The application and care given to each piece are always unique. Each piece is unique, signed and numbered from 1 to 8.

### DIAMOND-POINT ENGRAVING

Pauline Roy's diamond-point technique is constantly evolving over time. Digging into the material with a stylus is a long and meticulous process. The stylus digs into the material, breaking it up or caressing it. The shape is born very gently and takes shape on the glass in the light. The volumes are soft and curved, with real finesse.

### SANDBLASTING

Sand is sprayed at very high pressure through a hose guided by the hand. Everything depends on the inclination of the material, the movement of the hand and the pressure exerted on the glass. The corundum, a very fine sand, digs into the glass. Sandblasting takes a long time. The glass resists. It is the different contrasts between the indentations that create the volume of the designs.



1.



2.



3.



4.

Left Page  
Powder pink vase  
with camellia design  
2025  
Glass

Below :  
1. Sandblasted  
presentation sample  
2023  
Sandblasted Glass  
2. Engraving with  
a stylus fitted with a diamond tip  
2020  
Glass  
3. Part being sandblasted  
Glass and stencil  
4. In the sandblasting cabinet







# TAMING THE MATERIAL

**GLASS, AN AGE-OLD MATERIAL CONSIDERED PRECIOUS IN ANCIENT EGYPT, IS NOW PART OF OUR EVERYDAY LIVES: WORKED, SANDBLASTED, ENGRAVED, IT OFFERS AN INFINITE WORLD OF EXPLORATION AND TEXTURE.**

Depending on the different stages of the project, the glass takes on many different textures. It is hard but also soft, tender and rough at the same time. It can cut, break or shatter.

When Pauline Roy starts working on her pieces, she enters into a kind of struggle with the material. The glass weakens under the high-pressure sand, contracts, tightens, then softens and bends. It becomes another material that feels sensual to the touch.

Glass vibrates in the light and takes on different shades when sandblasted. It is initially transparent and translucent. - Float glass is luminous and varies up to the colour of jade. It becomes milky then duck blue and can also turn grey. - Extra-clear glass turns immaculate white when sandblasted. - Coloured glass offers a whole range of shades depending on the colour and light, until it becomes opaque.

In her research, Pauline Roy sands her samples in different ways: on one side only, on both sides, in hollow or bas-relief, in other words hollowing out the motif or, on the contrary, the background.

His research has enabled him to apply his decorations to volumes and to design objects and furniture.



1.



2.



3.



4.

Left Page :  
Vase with cherry  
blossom design  
2020  
Blown and  
sandblasted glass

Below :  
1. Sandblasted  
presentation sample  
2023  
Sandblasted glass

2. Sandblast  
touch-up using  
a diamond-tipped stylus  
2023  
Sandblasted glass

3. & 4. Stencil trimming







## CREATIONS

«WHEN I WORK ON MY PIECES, THE GLASS AND I ENTER INTO A KIND OF STRUGGLE FROM THE OUTSET. THE GLASS WEAKENS UNDER THE HIGH-PRESSURE SAND, CONTRACTS, TIGHTENS AND THEN SOFTENS AND BENDS. IT BECOMES ANOTHER MATERIAL THAT IS SENSUAL AND SOFT TO THE TOUCH.

### VASES

To design the shape of her vases, Pauline Roy drew inspiration from the traditional shapes of Chinese porcelain with blue and white decoration held in the collections of the Musée Guimet.

Sandblasting curved surfaces is a real technical challenge.

The difficulty lies mainly in the installation of the stencils, which determine:

- the spaces sanded,
- the regularity of the depth of sandblasting.

All Pauline Roy's vases and candle holders are mouth-blown by Vincent Breed.

1.



Left Page :

Vase

'Flore Occitane'

2025,

blown and sandblasted glass

Flowers : Voici des Fleurs

Below :

Vase with Dandelion

flower design

2023, blown and sandblasted glass

Photograph taken during

the installation of the vases

exhibition at the gastronomic  
restaurant Le Suquet in Laguiole







## CREATIONS

THE MOTIFS RESPOND TO EACH OTHER, LEAVING ROOM FOR THE LIGHT TO PASS THROUGH THEM, GIVING THE ILLUSION OF MOVEMENT IN THE PALM LEAVES.



### BACKLIT MIRRORS

Pauline Roy has designed two mirrors combining glass, mirror and brass. These two pieces were designed especially for the Révélations 2022 show. The structures were manufactured by Métalleries Bordelaises.

### PALM NESTING TABLES

Pauline Roy designs her nesting tables and sands her decorations. The motifs respond to each other, leaving room for the light to pass through them, giving the illusion of movement in the palm leaves. When assembled, the nesting table becomes a single transparent piece.

These nesting tables are the result of research focusing on composition, materials, lightness and balance. The brass tripods, bent to the dimensions of the tops, were designed with the help of Marco Roy and Julie Descamps. The structures were redesigned and made to measure by Métalleries Bordelaises.

Left Page :  
Backlit mirror with olive branch  
motif and sandblasted vases  
2021/2022  
Sandblasted glass and brass  
Sandblasted and blown glass

Below :  
Palm leaf nesting tables  
2021/2022  
Sandblasted glass and brass  
Flowers : Voici des Fleurs







# CREATIONS

## INSTALLATION OF 'FLORE D'AUBRAC' WALL LIGHTS.



As a tribute to her region, Pauline Roy is creating an installation of sconces in 2023 entitled 'Flore d'Aubrac'. Pauline Roy's aim is to make beech and oak leaves and dandelion flowers dance and move through the luminous prism of the glass in her sconces.

Left Page :  
Installing wall lights  
« Flore d'aubrac »  
2023  
Sandblasted glass and brass

Below :  
Aubrac landscape  
Silver print  
Photo by Xavier Roy

### INTRODUCTION TO THE AUBRAC PLATEAU

Ripples as far as the eye can see, infinite mountain pastures that roll out their muffled moorland without ever stopping your gaze, this volcanic plateau of rugged, uncluttered beauty is truly the magic mountain of Aveyron: returning to Aubrac is always a first.

A few rare vertical elements: piles of basalt and granite, groves of beech, oak and birch, and dark strips of fir punctuate the landscape in counterpoint.

Here, simplicity is accompanied by silence, and nature as far as the eye can see offers a spiritual dimension to those who witness it for the first time. To contemplate the Aubrac plateau is to contemplate eternity.

One season follows another. Snow-covered in winter, Aubrac is reborn in spring, a green land of pastures strewn with flowers, streaked with streams and rainbow lakes. Despite its immensity, the plateau is alive with an infinite variety of flora and fauna. Aubrac is home to 2,000 listed plants, many of them rare and protected.

Metal design and lighting by Malo du Bouëtiez







## CREATIONS



1.



2.

### LES FEUILLES DE HÊTRE

(Beech leaves)

Sandblasted glass

brass

n°1/8, 2023

Diameter 40 cm

Weight approx. 8 kg

Walk in the shade of the trees along the GR 45, the Route of St. James, in the heart of the Aubrac plateau. Take a break, sit down against the trunk of a beech tree and contemplate the green roof of the branches. The light accentuates the relief of the leaves dancing in the wind.

Left Page :

Wall light « Les arbres »

(The trees)

dans le cadre de la Biennale

Révélation, stand de la région

Occitanie

2023

Sandblasted glass and brass

Below :

Installation of Flore d'Aubrac sconces

as part of the Révélation Biennial,

regional stand Occitanie

2023

Sandblasted glass and brass

### LES PISSENLITS

(Dandelions)

Sandblasted glass and brass

N°1/8, 2023

Diameter 80 cm

Weight approx. 25 kg

Dandelion. The most common flower. Like the swallow, it heralds spring. Dandelions dot the pastures of Aubrac, heralding the awakening of nature. Pauline Roy tells the story of dandelions in motion: their thick, fluted stems, their edible leaves. They emerge from an earth that is still cold but damp and heavy, their many petals tousling in the wind that adorns them with multiple faces.

### LES ARBRES

(The Trees)

Sandblasted glass and brass

n°1/8, 2023

Diameter 60 cm

Weight approx. 14 kg

Pauline Roy tells the story of the birch, fir, cedar, oak and beech trees that populate the Aubrac plateau. Often grouped together, their arrangement accentuates the sobriety of the landscape and gives it a particular geometry.

The bark of these trees is their genetic imprint, a veritable plant skin that protects the circulation of the sap. Its various textures testify to its strength and age. Touching them is enough to feel the life that animates them. They endure and grow through long, harsh winters.

In the foreground, oak leaves caught in a breeze come to life and appear lightweight. The light tells of the sun's rays caught in the leaves, streaming to the ground.

### WALL LAMPS

Aveyron is Pauline Roy's creative haven. Today, she celebrates the flora of the Aubrac plateau and the strength that emanates from it.

These sconces are the first three pieces of a larger project.

The three glasses are reversible: the intensity of the light varies depending on which side is exposed. Smooth glass reflects the light, while sandblasted glass absorbs it, but reveals the volume of the bas-relief motifs (hollowed out to a depth of 7 mm). The light unfolds differently depending on which side is exposed.

The dimming mechanism is integrated behind the brass center, and the LEDs are used on both the exterior and interior sides. Sconces are suspended from the center.

Exhibited at :



2. Wall light : profile and mechanism  
2023







# COLLABORATION AND TABLEWARE

PAULINE ROY AND VINCENT BREED



## AN ARTISTIC COLLABORATION

Pauline Roy and Vincent Breed worked together to create the table centrepieces. What an inspiration this tableware theme, celebrated throughout history and around the world! Vincent suggested shapes, Pauline drew them, and they quickly came to an agreement based on mutual trust.

### Vincent Breed

A glassblower and president of the Hotshop France association, his workshop is a research and development laboratory for creative and demanding glass projects.

## « MILLE FLEURS »

(A Thousand Flowers)

Le centre de table « Mille fleurs » est orné de fleurs des montagnes comestibles : pensées, edelweiss et pissenlits. Elles se déploient avec beaucoup de relief grâce à la forme sphérique et la gravure en profondeur.

## « LES GALETS »

(Pebbles)

The voices of the rivers resonate like a natural symphony, where every drop of water contributes to a vibrant concert. The water is noisy, creating a lively melody that accompanies the landscape. Water flows with grace, gliding over surfaces, while it gushes with force, testifying to the power of nature. Water pours out in an uninterrupted stream, nourishing rivers and lakes and transforming the surrounding landscape. It

wears away the pebbles, shaping them over time, making them roll and dance under its current. Each movement of the water tells a story of transformation and erosion, an eternal cycle where life and nature intertwine.

Left Page :  
Table centrepiece  
**Mille fleurs**  
2022

Blown glass by  
Vincent Breed  
Sandblasted by Pauline Roy

Below :  
Table centrepiece  
**Les galets**  
2024

Glassart Exhibition in Lyon  
Sandblasted solid glass shaped  
with a ferret by Vincent Breed  
and sandblasted  
by Pauline Roy







## GALERIE AVANT-SCÈNE

PAULINE ROY IS PARTICULARLY PLEASED TO SEE HER WORK EXHIBITED AT THE AVANT-SCÈNE ART GALLERY.



Left page and below :  
Dish with mountain flower motif  
2024  
Sandblasted thermoformed glass  
Flowers : Voici des Fleurs

### TABLEWARE

The arts of the table are those associated with communal meals, the presentation and serving of food, conversation and civility, the decoration of furniture and utensils and the places used for gastronomic or oenological pleasures.

An exhibition in the 1980s in a major Paris museum. Pauline Roy was 7 or 8 years old and visited the exhibition with her grandmother. The theme: the great tables of history. Fairytale settings worthy of Jean Cocteau films. «We went back several times at my request. So the art of the table was always there, always in my mind».

### GALERIE AVANT-SCÈNE

Pauline Roy will be exhibiting two of her tableware pieces at the Avant-Scène gallery in Paris, where the works selected by Elisabeth Delacarte have been acclaimed by enlightened connoisseurs and the media, as well as by international auction houses, confirming their market value.

Galerie Avant-scène  
4 place de l'Odéon  
75006 Paris  
[www.avantscene.fr](http://www.avantscene.fr)







# GALERIE CUB'ART

PAULINE ROY IS DELIGHTED TO PRESENT HER WORK AT THE CUB'ART GALLERY IN ALBI, IN THE OCCITANIE REGION OF FRANCE: THE SELECTION OF WORKS IS OF HIGH QUALITY AND ECLECTIC!



1.

Left page :  
Vase with Iris motif  
2024  
Blown and Sandblasted glass  
Flowers : Voici des Fleurs

Below :  
1. Vases with  
poppy flowers  
2024  
Blown and Sandblasted glass  
Flowers : Voici des Fleurs

2. Galerie Cub'art, Albi ©DR  
3. Albi ©DR



2.



3.

## CUB'ART

«Bringing together talented individuals in excellent professions. To create a group of people who share the same values». This is the aim of the CUB'ART association, which runs a gallery in Albi in the Occitanie region of France. In 2024, Pauline Roy had the opportunity to exhibit her work as part of the 'La main à l'outil#4' exhibition, which was a great success.

The CUB'ART gallery boasts a collection of high-quality works, encompassing a multitude of styles and techniques, making it an ideal venue for art lovers.

For Pauline Roy, seeing her work exhibited in Occitanie represents not only recognition of the quality of her skills, but also a valuable opportunity to engage in dialogue with other artists and exchange ideas.







## DOOR HANDLES PROJECT



1.

### MARSHAL STICKS

The marshal's baton as a door handle is an object that combines functionality and refined aesthetics. Designed for a comfortable grip, the handle is often contoured to fit the shape of the hand.



2.



3.



4.

Left page :  
**Door handles project**  
 2025  
 Sandblasted Glass  
 Flowers : Voici des Fleurs  
 For architects group Bertrand Prestige

Below :  
 1. & 2.  
**Door handles project (detail)**  
 2025  
 Sandblasted glass

3. **Presentation sample**  
 2025  
 Sandblasted glass

4. **Tying**







# MADE TO MEASURE

IT'S ALSO ABOUT WORKING HAND IN HAND AND IN MUTUAL TRUST TO ACHIEVE A COMMON GOAL: BEAUTY AND EXCELLENCE.

Left page  
Table top with Savannah Animals,  
detail of the lioness, 2023  
Sandblasted glass  
Diameter: 160cm  
For the Bertrand Prestige group  
and Hugues Chevalier



1.



2.



3.

## CONFIDENTIAL PROJECTS

In addition to the objects and furniture she creates, Pauline Roy works closely with clients, mainly architects and private individuals, on projects that are increasingly ambitious both from a technical point of view and in terms of the size of the work surfaces involved. These projects are also human stories. For Pauline Roy, it's a question of working within a very specific framework and putting all her creativity to work. The success of these projects also comes from working hand in hand with the client, in a spirit of mutual trust, to achieve a common goal: beauty and excellence.

Opposite  
2. study of a lioness head  
Table top with Savannah Animals, 2023  
Diameter: 160cm

3. Table top with Savannah Animals,  
detail of the Zebra, 2023  
Sand-blasted glass  
Diameter: 160cm  
For the Bertrand Prestige group  
and Hugues Chevalier

3. Table top with Savannah Animals,  
detail of the lioness, 2023  
Sand-blasted glass  
Diameter: 160cm  
For the Bertrand Prestige group  
and Hugues Chevalier

4. Stencil



4.

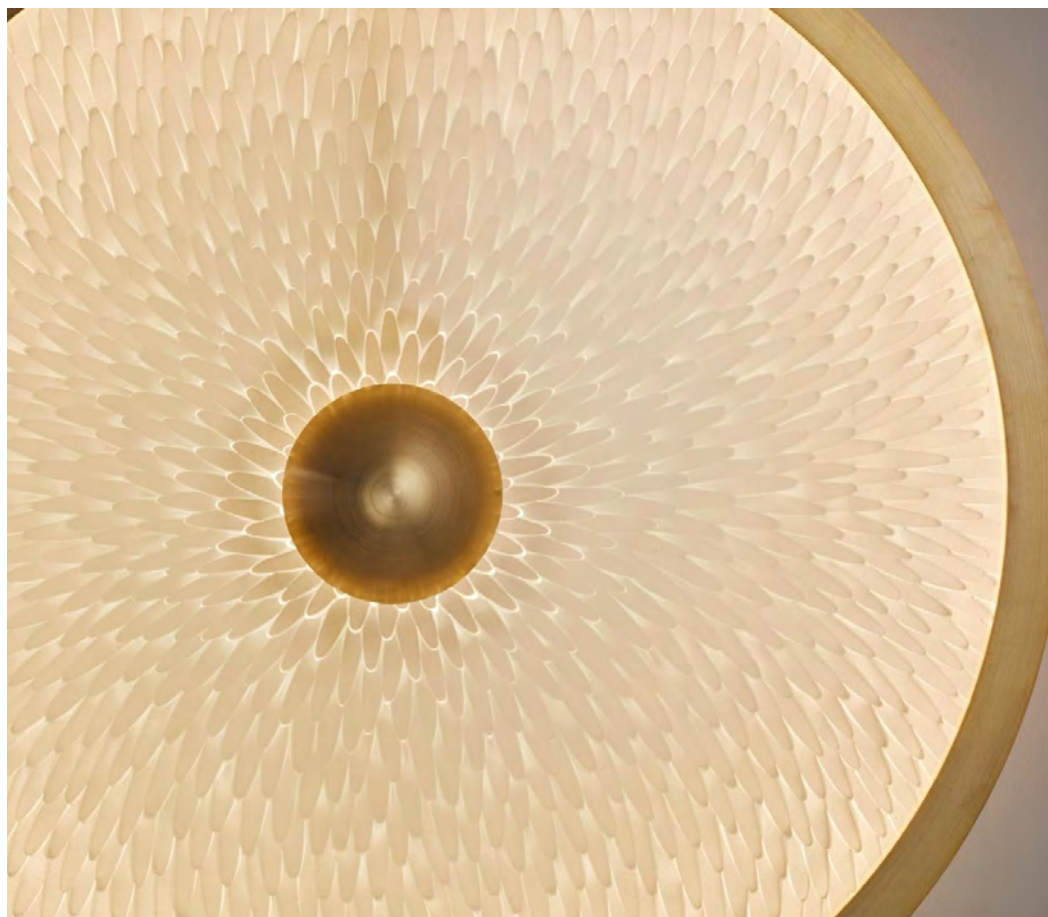






# MADE TO MEASURE

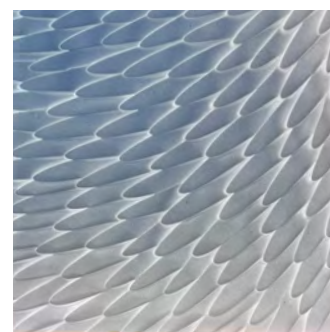
## DESIGN OF LIMITED EDITION PERFUME BOTTLES AND LIGHTING FOR MYDRIAZ



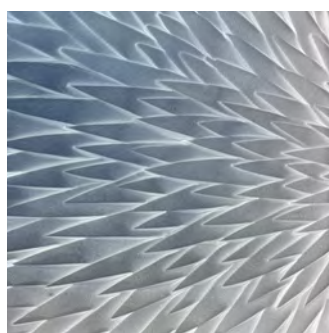
1.

### CREATING MATERIALS

Pauline Roy also works for a number of designers who ask her to sandblast their creations. This engraving work allows Pauline Roy to explore other fields of graphic, artistic and technical exploration.



2.



3.



4.

Left page :  
Project for limited edition  
perfume bottles  
2023  
Glass  
Flowers : Voici des Fleurs

Below :  
1. & 4. Wall light  
sandblasted for Mydriaz  
2023  
Glass & brass

2. & 3. Tests /  
samples phase  
2023  
Glass







# MADE TO MEASURE

## AN INTERIOR WINDOW *VUE SUR UN JARDIN IMAGINAIRE* (View Of An Imaginary Garden)



1.



2.

Left page :  
*An interior window*  
*Vue sur un jardin imaginaire*  
(View Of An Imaginary Garden)  
*Vase with Dandelion*  
*flower design*  
2023, blown  
and sandblasted glass

Below :  
1. *Vue sur un jardin imaginaire*  
(View Of An Imaginary Garden)  
in the workshop  
2. *Redrawing the stencil*  
*before installation*  
2023  
3. *Vue sur un jardin imaginaire*  
(View Of An Imaginary Garden)  
*Vase with Dandelion*  
*flower design*  
Details  
2023



3.







# AVEYRON, LAND OF INSPIRATION

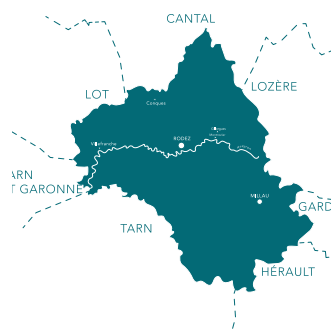
PAULINE ROY PAYS HOMAGE TO HER AUSTERE, HARSH AND CONTRASTING REGION THROUGH HER WORK AND CHOOSES TO ANCHOR HER CREATIONS THERE.



1.

Aveyron is an austere, rugged, undulating land of contrasts. Pauline Roy has chosen to anchor her creations here, and draws inspiration from the land she calls home. Summers here are grassy and warm, autumns are colourful and mild, winters long and cold, and spring a rebirth. The hills are round, the plateaux immense and depopulated.

Romanesque art unfolds magnificently here, with Conques and its colourful, lively tympanum, Saint-Pierre de Bessuéjols with its oratory hidden in its bell tower, and the chapel of Roquelaure, whose altarpiece is peopled with characters whose expressions are heartbreakingly sincere. Pierre Soulages remains the pride of the department. He was said to be charismatic, reserved and serious. His work is imbued with the region: rigorous and frank, there is no pretence. In Aveyron, nature is omnipresent, celebrated and protected by its inhabitants. These dimensions are an integral part of Pauline Roy's work: when she's in her fiefdom, she draws, photographs, observes, soaks up and feeds off everything that surrounds her.



2.



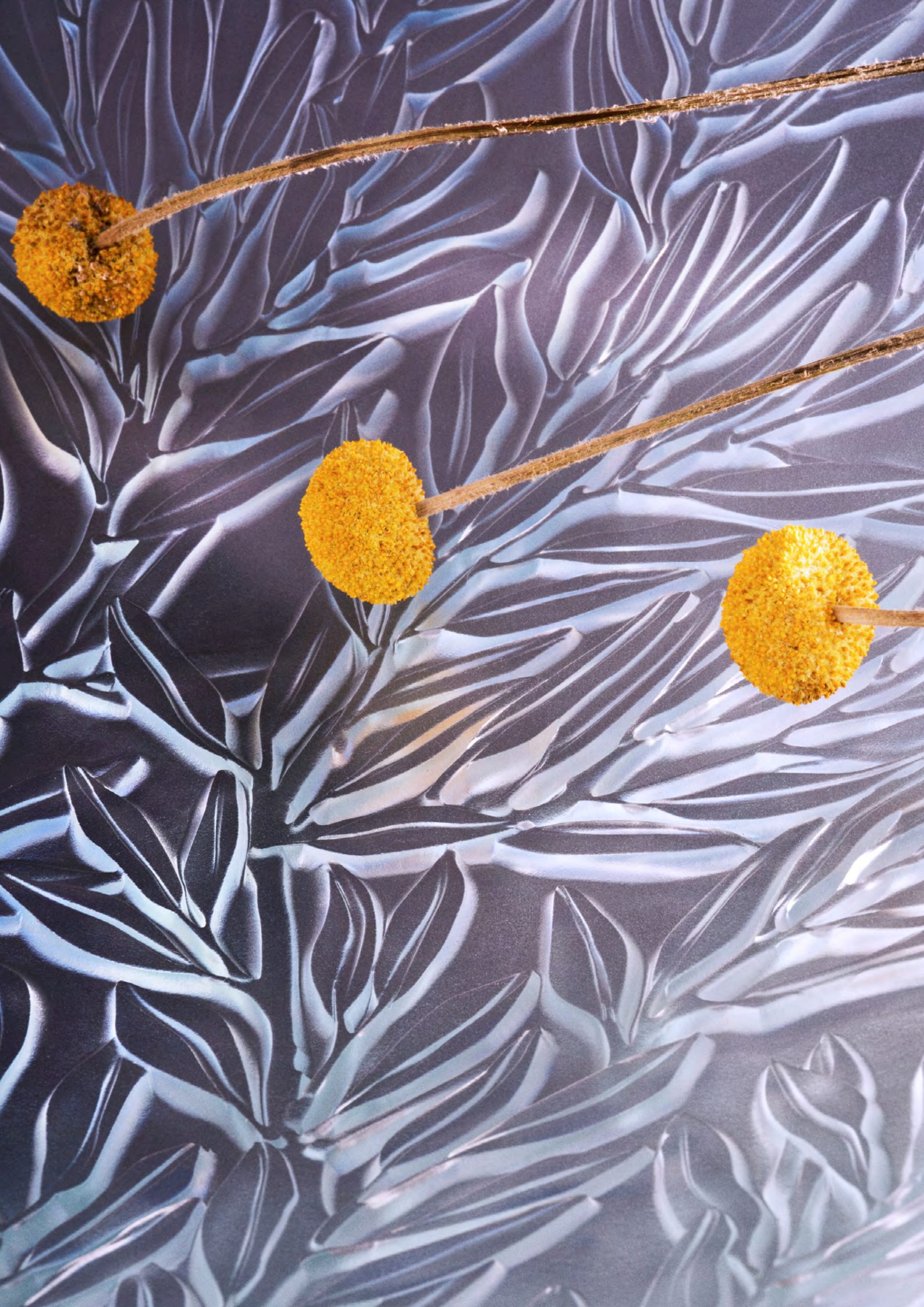
3.

Left page  
*Les feuilles de hêtre*  
(Beech leaves)  
2023  
Glass  
Exhibited at Le Suquet,  
Gastronomic Restaurant

Opposite  
1. *Aubrac landscape*  
Silver print

2. *Aveyron Map*  
3. *Workshop Team*  
2023

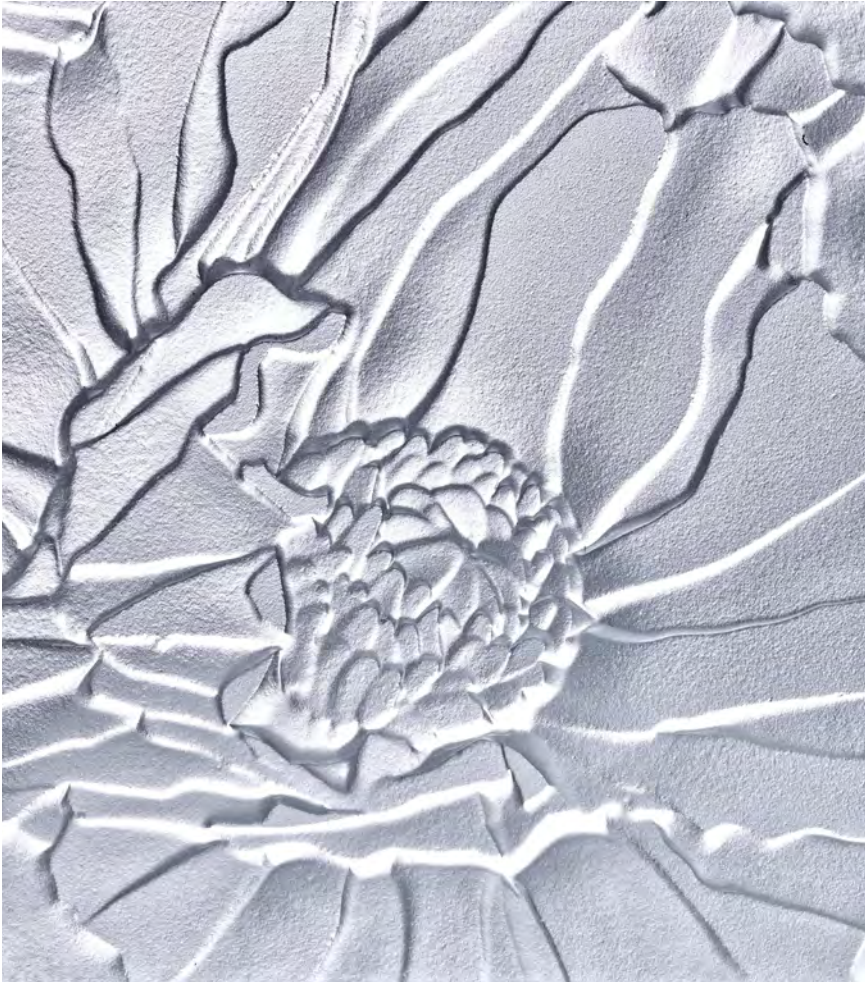






# PAULINE ROY, ETCHINGS NEXT

## EXHIBITIONS, TRADE FAIRS.



1.

### **SALON ARTISANS D'EXCELLENCE IN PARIS**

From 2 To 4 October 2025

The Salon Artisans d'Excellence, organised by Miguel Duterrier and Isabelle de Lasteyrie, showcases the art of craftsmanship through a selection of independent artisans in a perfect setting.

It takes place in the heart of Paris, at the Hôtel des Italiens, a magnificent Haussmann-style building, because aiming for excellence also means choosing a setting worthy of the creations presented.

Pauline Roy can't wait to take part in this show, to present a great wall of glass, and it's a joy to work with Miguel and Isabelle, who have a remarkable knowledge of our businesses.

*Hôtel des Italiens*

*19 bd des Italiens, 75002 Paris*

<https://artisansdexcellence.fr>



2.

### **EXHIBITION**

#### **SUR LE CHEMIN DE L'ARBRE (on the way to the tree) IN AVEYRON**

From 9 December 2025 to 5 January 2026

Every year, Pauline Roy is keen to take part in an exhibition in Occitanie, the region that supports her work.

In 2025, Pauline Roy and Éric Gizard, the famous designer and photographer, will combine their talents to celebrate the beauty and majesty of trees through an exhibition entitled 'Sur le chemin de l'arbre'. Together, they will attempt to offer a unique and moving vision of nature, combining decorative art and photography to magnify the essence of trees and their visual impact on our environment. A real challenge.

The exhibition will take place in Bozouls in Aveyron, a remarkable village famous for its impressive horseshoe-shaped canyon, spectacular scenery and rich architectural heritage.

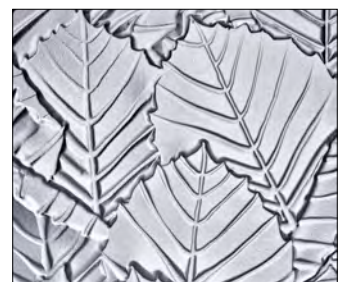
*La Galerie*

*8 All. Paul Causse, 12340 Bozouls*

[www.ericgizard.com](http://www.ericgizard.com)



3.



4.

Left Page :  
Large dish  
with olive branch design  
2022  
Thermoformed  
and sandblasted glass

Below :  
1. Sandblasted  
presentation sample  
2023  
Sandblasted glass

2. Hôtel des italiens,  
© D.R.

3. Untitled  
© Eric Gizard

4. Sandblasted  
presentation sample  
2022  
Sandblasted glass







# PAST EXHIBITIONS AND TRADE FAIRS

PAULINE ROY REGULARLY EXHIBITS HER WORK AT PUBLIC AND PROFESSIONAL SHOWS.

**LES RENDEZ-VOUS  
DE LA MATIÈRE**  
10<sup>e</sup> ÉDITION + FAIR(E)

## TRADE FAIR LES RENDEZ-VOUS DE LA MATIÈRE + FAIR(E) 15 & 16 October 2024

Les Rendez-vous de la matière + fair(e) is the must-attend event dedicated to innovative materials in architecture, design, decoration and interior design. At the show, Pauline Roy presented a luminous piece entitled 'Dans l'arbre', featuring a décor of bark covered in leaves and moss.

LES ATELIERS  
**CUB  
ART**

## EXHIBITION LA MAIN EST L'OUTIL#4 IN ALBI From 18 October to 3 November 2024

Participation in the fourth edition of the exhibition 'La main est l'outil' organised by the Cub'Art association at the Hôtel Rochegude in Albi, an event now recognised and eagerly awaited by art lovers. Rozenn Alapetite, president of the association, and her team have chosen eclectic talents who share a common goal: to create, together, a real harmony in order to disseminate and promote the arts and crafts. The Hôtel Rochegude, a symbol of Albi's architectural and cultural heritage, is an ideal setting for a major artistic event and for a contemporary and innovative approach to art exhibitions.

**GLASSART 2024**

## EXHIBITION LES VOIX DU VERRE IN LYON From 11 October to 6 December 2024

The exhibition, presented by HOTSHOP FRANCE & Stéphanie Vallé, is referenced by the Lyon Biennial of Contemporary Art, during which artists, designers and craftspeople use the medium of glass to express their sensibilities. GlassArt2024 showcases emerging talent alongside internationally renowned artists. Pauline Roy was delighted to have been selected as an Emerging Talent and to see my work exhibited alongside well-known artists.

**CAPSULE FORMÆ  
AT COLLECTIBLE  
LES RENDEZ-VOUS  
DE LA MATIÈRE + FAIR(E)**

## TRADE FAIR COLLECTIBLE IN BRUXELLES AS PART OF THE CAPSULE FORMÆ From 7 to 10 March 2024

From 7 to 10 March 2024, the international design fair Collectible was held at the Espace Vanderborcht in Brussels. The fair offered a forward-looking look at materials via a scenographic space, FORMÆ by les Rendez-vous de la matière + fair(e), covering more than 300 m2. It was in this paper showcase (produced by Procédés Chénel) that Pauline Roy exhibited her work, focusing on the different materials she creates using the glass etching technique.

PARIS  
DÉCO  
HOME

## TRADE FAIR PARIS DÉCO HOME From 17 to 21 January 2024

From 17 to 21 January 2024, as part of the Paris Déco Home Show, Stéphanie de Surmont - Le Luxe artisan will be bringing together ten artists on its stand, designed by Julia Bancilhon of Studio Made of Matter. Pauline Roy gravures will be exhibiting her installation Flore d'Aubrac, themed on the Aubrac plateau. This vast regional nature park, with its gentle, rounded hills and one of the richest flora in Europe, stretches across three different départements, including Aveyron. With the support of ébénisterie Lachaud, Céline Angelini, Maison Saman, Uli, Nathalie Chaulaïc, La compagnie du verre, Dariul, Véronique Joly-Corbin, ateliers Sudwaste, La chaiserie Landaise, Binôme, Studio Made of Matters.....

RÉVÉLATIONS

## INTERNATIONAL BIENNIAL RÉVÉLATIONS IN GRAND PALAIS ÉPHÉMÈRE, PARIS From 7 to 11 June 2023

In 2023, Pauline Roy gravures will be exhibiting her work as part of the Révélations international biennial at the ephemeral Grand Palais from 7 to 11 June. This year, her stand will be decked out in the colours of her home region, Occitanie. What a source of pride it is to be surrounded by 11 highly talented artists and craftspeople from the Occitanie region, all supported and guided by the AD'OCC agency in Toulouse under the watchful eye and professional guidance of Olivia Perez. Janick Gouriou, scenographer, worked with each person on the stand's scenographic project for many months. An installation of sconces featuring beech leaves, dandelions and the trunks of fir trees, oak trees or birch trees in tribute to Aveyron and its incredible natural heritage: the Aubrac plateau.

BRAS

## EXHIBITION IN GASTRONOMIC RESTAURANT THE SUQUET, MAISON BRAS IN LAGUIOLE April - November 2023

Le Suquet, a mecca for French gastronomy, is perched on the Aubrac plateau in Aveyron. Run by Sébastien Bras, son of the famous chef Michel Bras, this restaurant, isolated in one of the most desolate parts of France, has acquired an international reputation. For the Bras family, cooking has always been a family affair. From generation to generation, Aubrac has been their source of inspiration, and they draw their creativity and originality from the products of this land. Beautiful and incredibly good, the flavours you taste at Le Suquet are unique and unrivalled. And that's how they came to meet Pauline Roy, a craftswoman from the Aveyron region.

RÉVÉLATIONS  
Biennale Internationale d'Art et d'Objets  
Paris | Grand Palais Éphémère | 9-12 juin 2022

## INTERNATIONAL BIENNIAL RÉVÉLATIONS IN GRAND PALAIS ÉPHÉMÈRE, PARIS From 9 to 12 June 2022

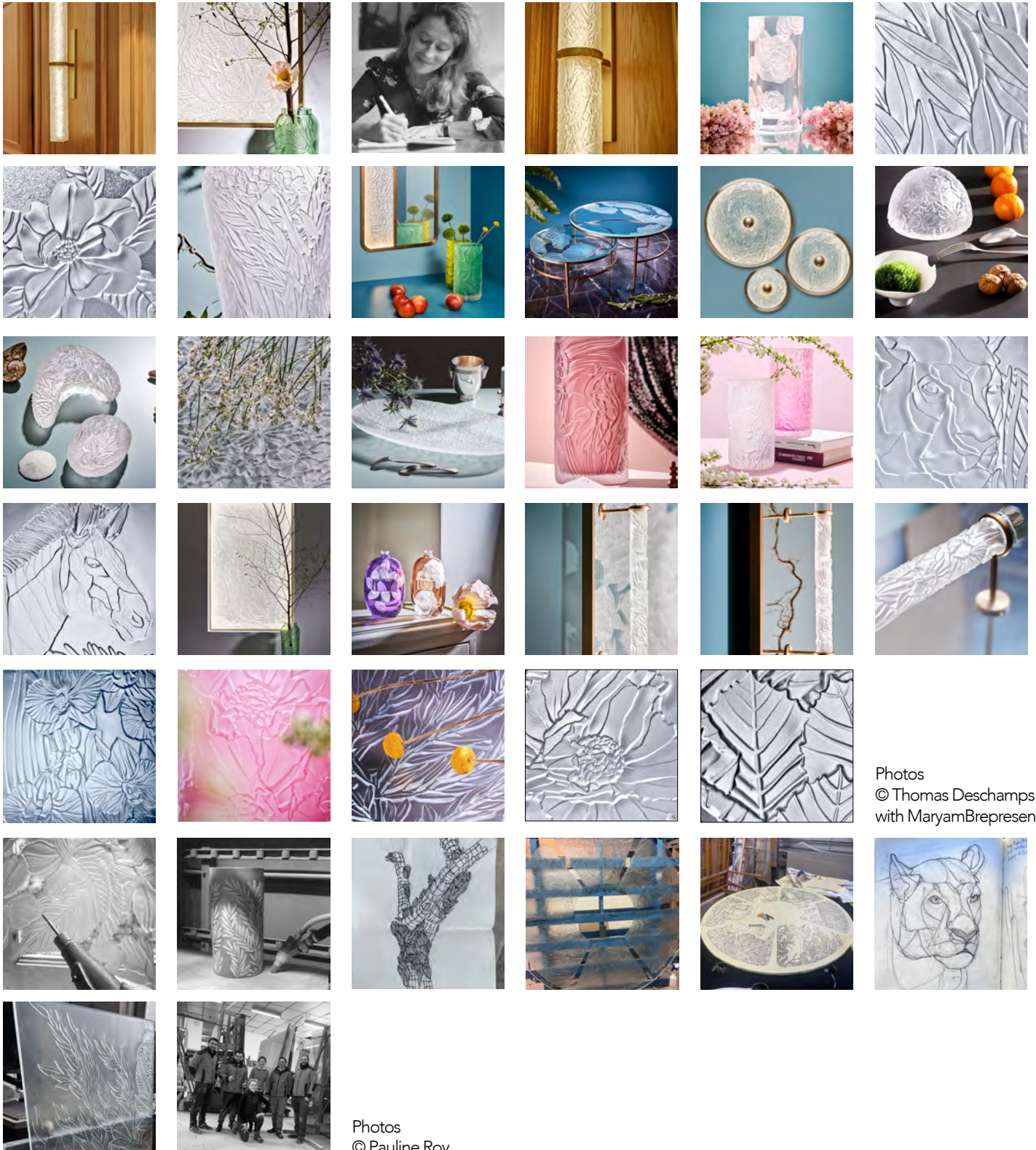
Pauline Roy will be presenting her first works and her incredible work in glass at the Révélations international biennial (Grand Palais Éphémère, from 9 to 12 June 2022), alongside 'La Duchesse aux pieds nus', a fairytale world of jewellery, and 'Maud Ruby plumassière', the feather in the cap of Haute Mode. All three have chosen each other to showcase their expertise. Pauline Roy is exhibiting her nesting tables with palm motifs, her vases and a prototype mirror that she designed and sandblasted. On the tops of the nesting tables, the motifs respond to each other, leaving room for the light to pass through them, giving the illusion of movement in the palm leaves. When the tables are assembled, they become a single transparent piece. These nesting tables are the result of research focused primarily on composition, materials, lightness and balance. The brass legs were designed in collaboration with Marco Roy. The structures were manufactured by Métalleries Bordelaises.

Left page :  
Vases with  
poppy flowers  
2024  
Blown and Sandblasted glass  
Flowers : Voici des Fleurs



# CRÉDITS PHOTOGRAPHIQUES

THE VISUALS PRESENTED IN THE PAGES OF THIS DOSSIER REPRESENT A SELECTION AVAILABLE TO THE PRESS. THESE IMAGES ARE FREE OF RIGHTS AND MAY BE USED. EACH IMAGE MUST BE ACCOMPANIED BY ITS CAPTION AND THE CORRESPONDING CREDIT. PLEASE CONTACT ME IF YOU WISH TO DOWNLOAD THEM IN HIGH DEFINITION.



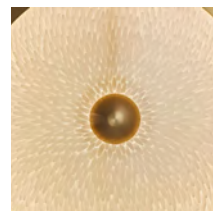
Photos  
© Thomas Deschamps  
with MaryamBrepresent

Photos  
© Pauline Roy





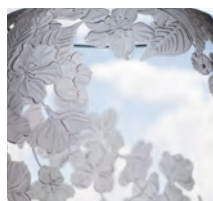
Photo  
© Tiffany Bazo  
Atelier Magdeleine



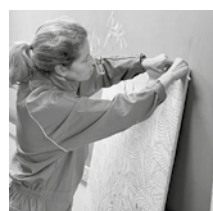
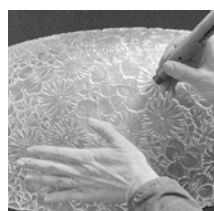
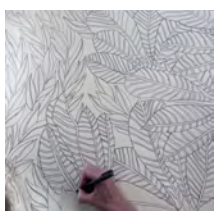
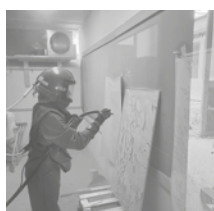
Photos  
© Jeremy Josselin



Photos  
© Eric Gizard



Photos  
© Audoin Desforges



Photos  
© Yoan & Ludovic Marti



Photos  
© Thomas Roy



Photo  
© Emmanuelle Braun



Photos  
© Xavier Roy

Thank you to : Gilles Chabrier, Vincent Breed, Ver'art, Eric Gizard, Thomas Deschamps de l'agence MaryamBrepresent, Maryam Boulares, Thomas Roy, Malo de Kerrorgen, Marie Duret-Robert, Atelier Monochrome, Louis Castillo, l'Agence Adocc', Olivia Perez, janick Gouriou, Laurent Taïed, Aurélia Modica ...

Merci à Bernadette Vizios, Sophie Roy et à Jean-Claude Muller de leur aide pour la rédaction de ce dossier. Merci Thomas Deschamps et Talent and Partner pour les photographies sublimes. Merci à Atelier Monochrome, Julien Gorrias, Lucile Boitelle, Cirrus studio, Demaarse Paris et Maud Ruby pour le prêt de leurs pièces. Merci à Voici des fleurs pour le prêt de ses fleurs avec tant de générosité. Merci à tous ceux qui m'ont conseillée, guidée, remarquée : Yoan et Ludovic Marty, audrey, Sam, Thomas Roy, Marie-Bérengère Gosserez, Bernard Pictet. Merci de m'avoir accompagnée, aidée et encouragée : Ma grande famille et mes amis : Guillaume, Louis, Ferdinand, Sakai, Aurélie, Thomas, Brigitte, Tante, Baba, Constance, Virginie, Jean-Marie, Christine, et Myrtille, Maryam, Rapha, Anne-Christine, Marie, Jean-Claude, Margot, Fred, Sarah, Yoan et Ludovic Marty, Maïté, Anne, Maud, Madina, Fabrice, Anne-Sophie Coulon, Amandine, Aurèle, Julie, Philippe, François Défossé, Danièle Brillaud, Sansan, Dédé, Nicoco, Belette, Fanche, Anne-Emmanuelle, Nathalie... Et à ceux que je ne cite pas qui, un jour, m'ont dit : « c'est bien ce que tu fais, continue. ».





**Pauline Roy**  
06 85 38 48 42  
paulineroy.gravures@gmail.com  
www.paulineroygravures.com  
45, rue du Pont Rouge, 12630 Montrozier

**Office**  
28, avenue de Suffren, 75015 Paris

**Workshop at Ver'art**  
167, rue de la Sauvegarde, 12000 Rodez

